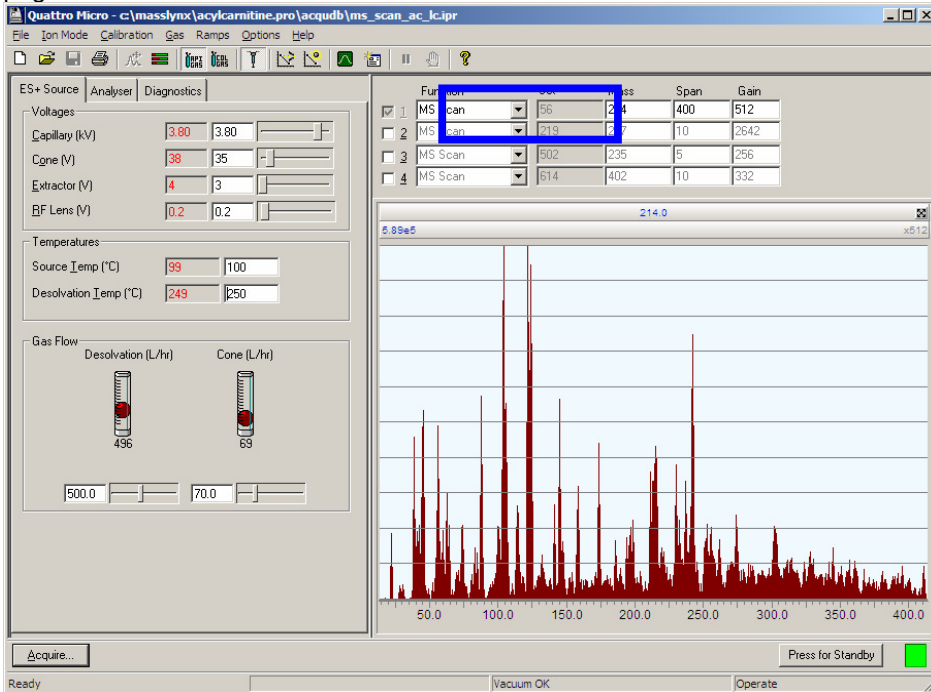


Running Samples in a Sample List - MassLynx

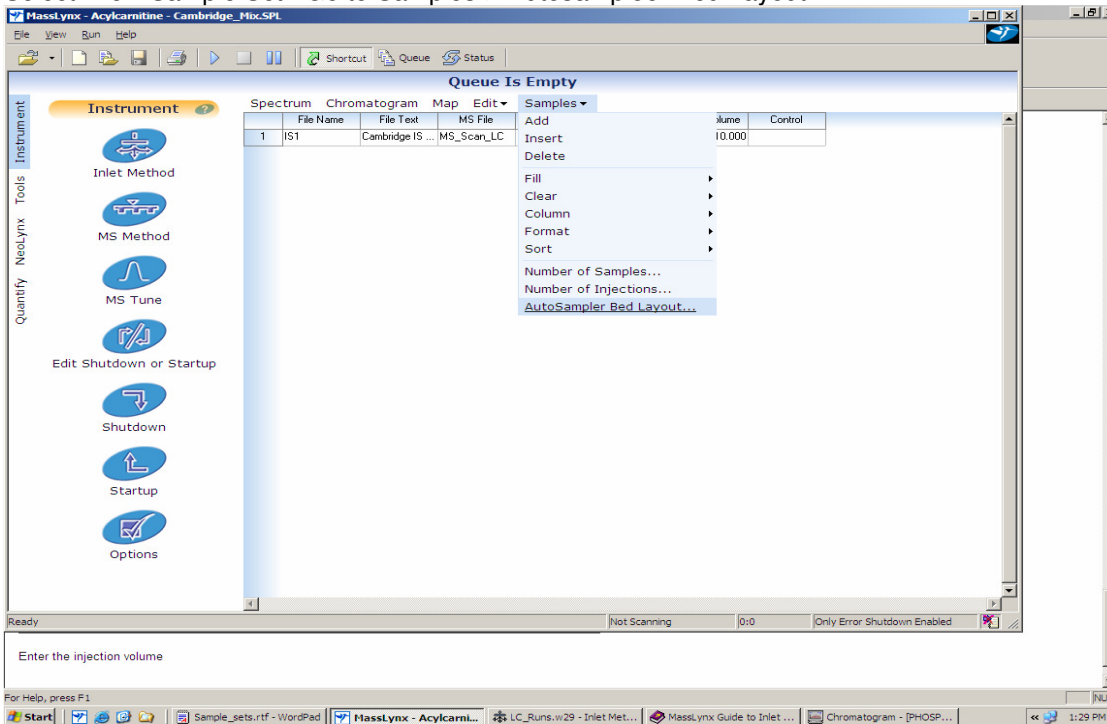
Connect the LC outlet into the MS interface and watch the spectrum of the effluents, using the option MS scan in the Tune page to see their cleanliness:



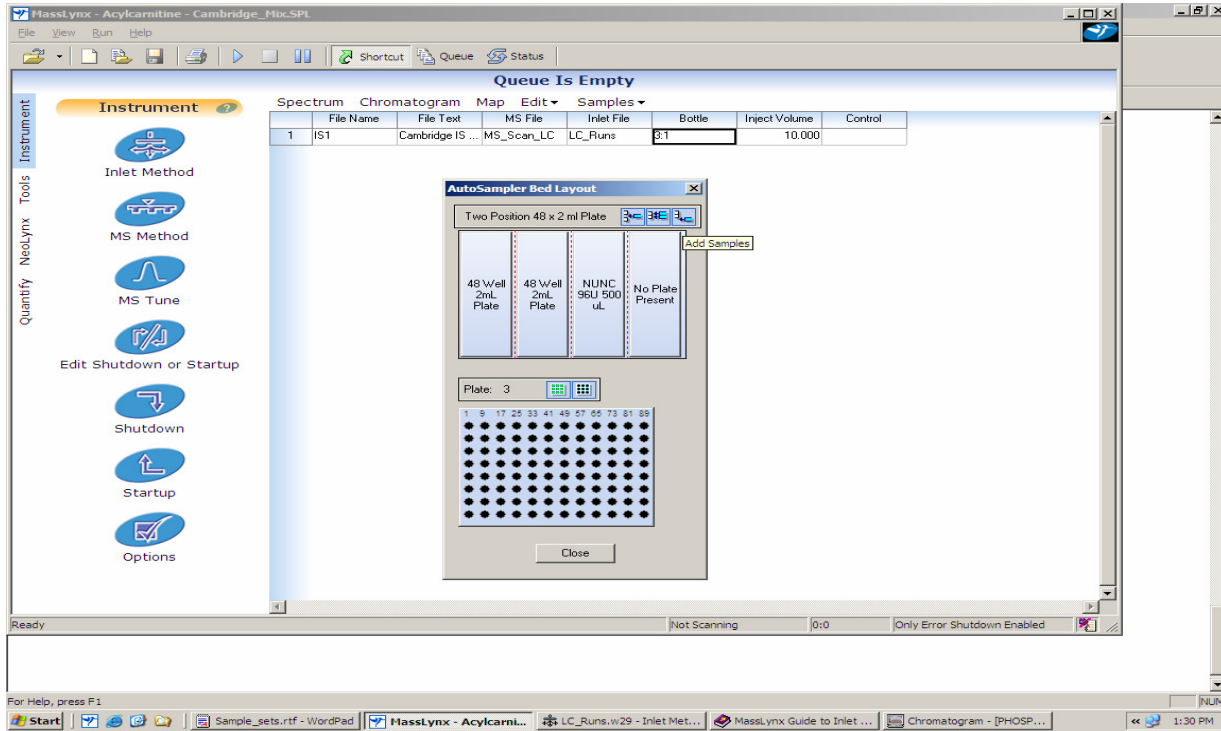
Make sure to have the same tune parameters as was done during the tuning by the syringe pump. **MAKE SURE TO INCREASE DESOLVATION TEMPERATURE** when using higher flow rates.

Go to main screen:

Select: New Sample Set. Go to Samples-> Autosampler Bed Layout

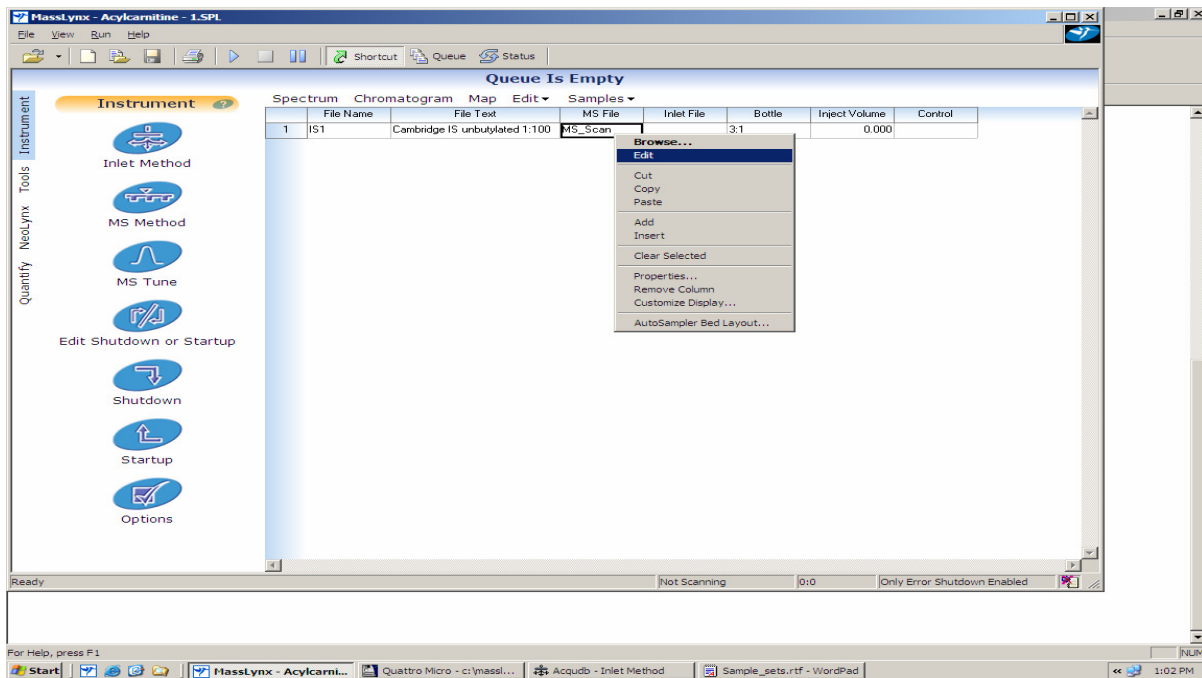


The window:



Click on well -> ADD SAMPLES to enter into the bottle column. Fill in the inlet method (HPLC method) and the MS file (MS method) as well as other parameters such as the injection volume.

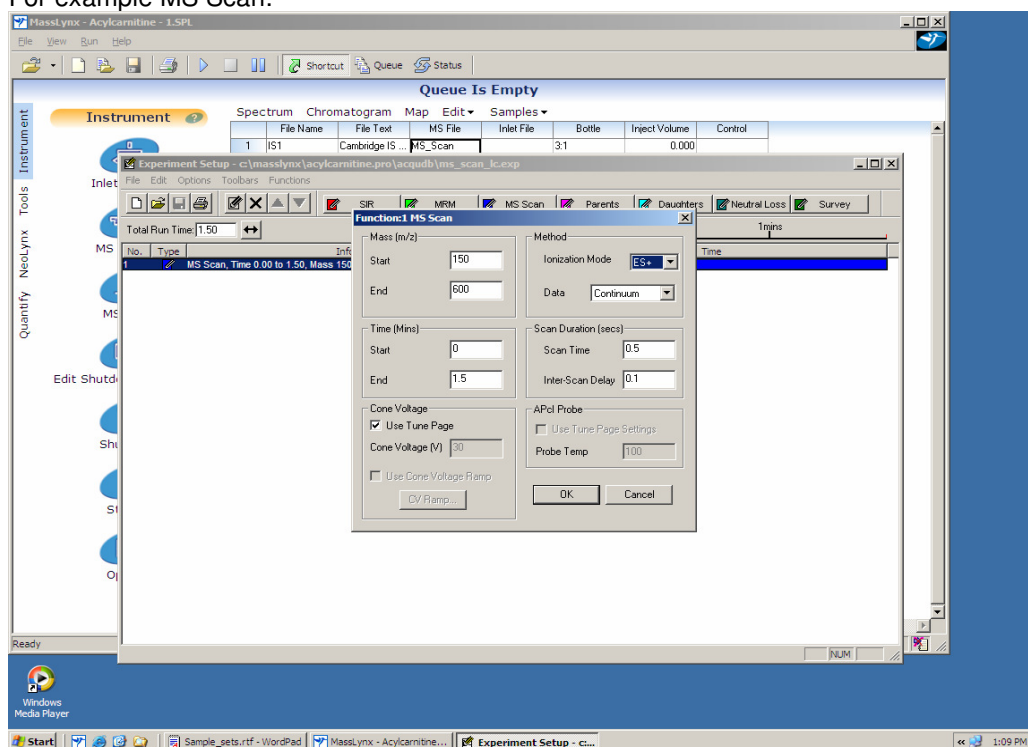
To select, create or edit the MS File-> select the first MS file cell and then right click for Browse or Edit:



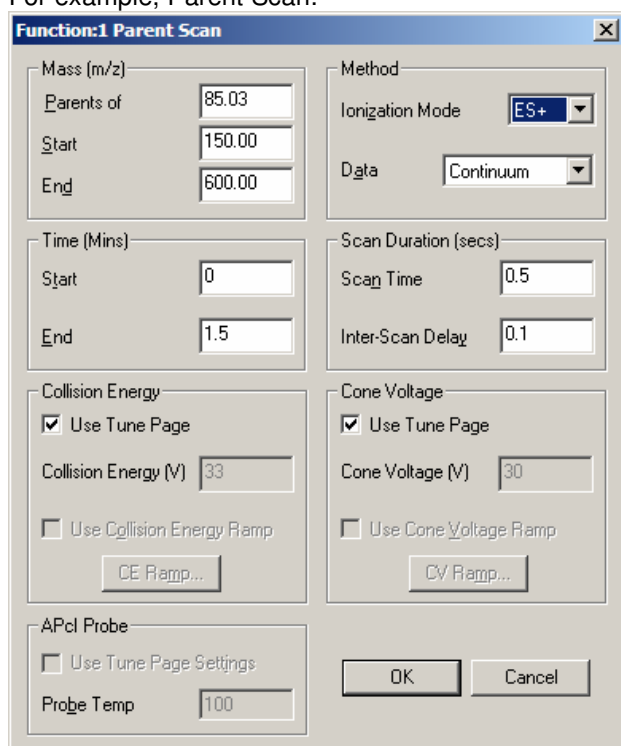
MS PARAMETERS

To Edit MS function select the MS file then right click-> Edit-> select the method and then click twice on the function line to edit it or select the right function to add more functions -

For example MS Scan:

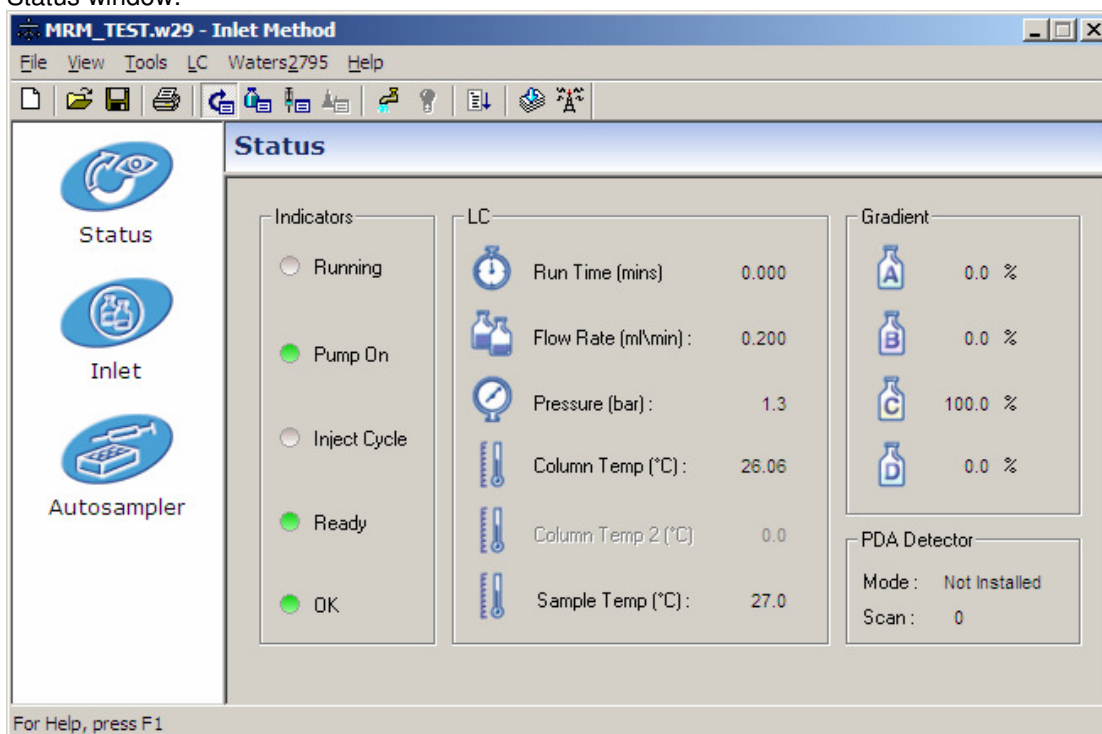


For example, Parent Scan:

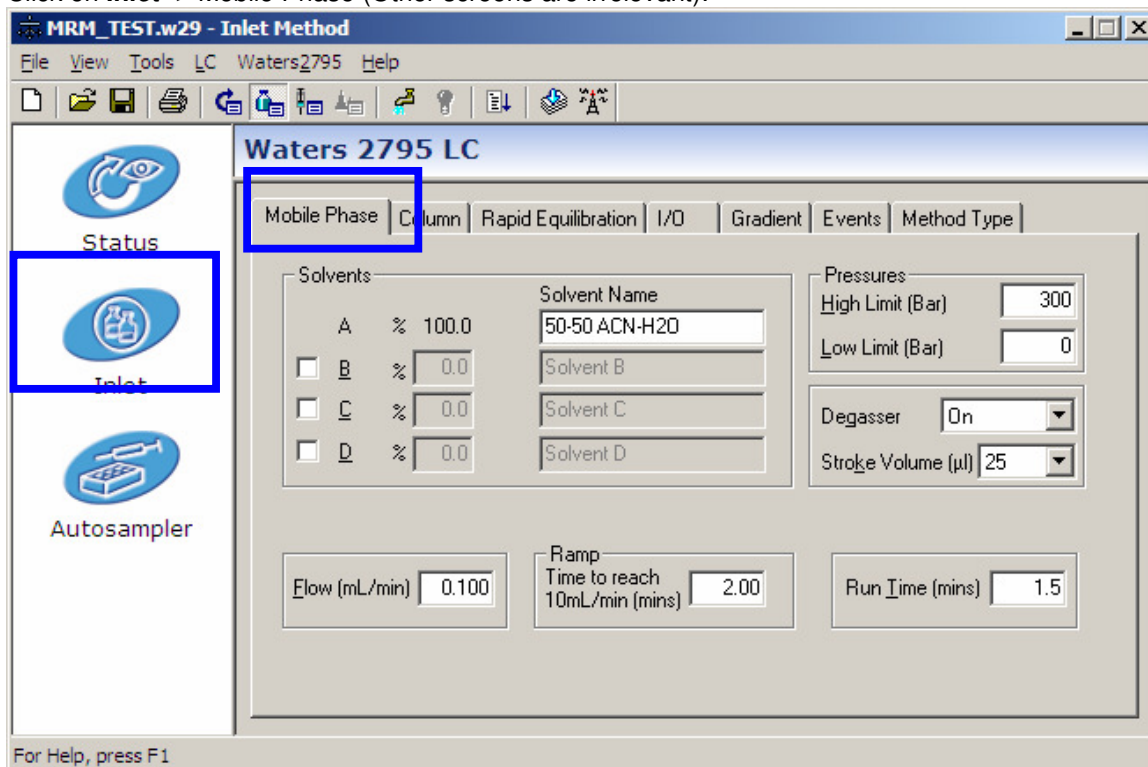


HPLC METHOD:

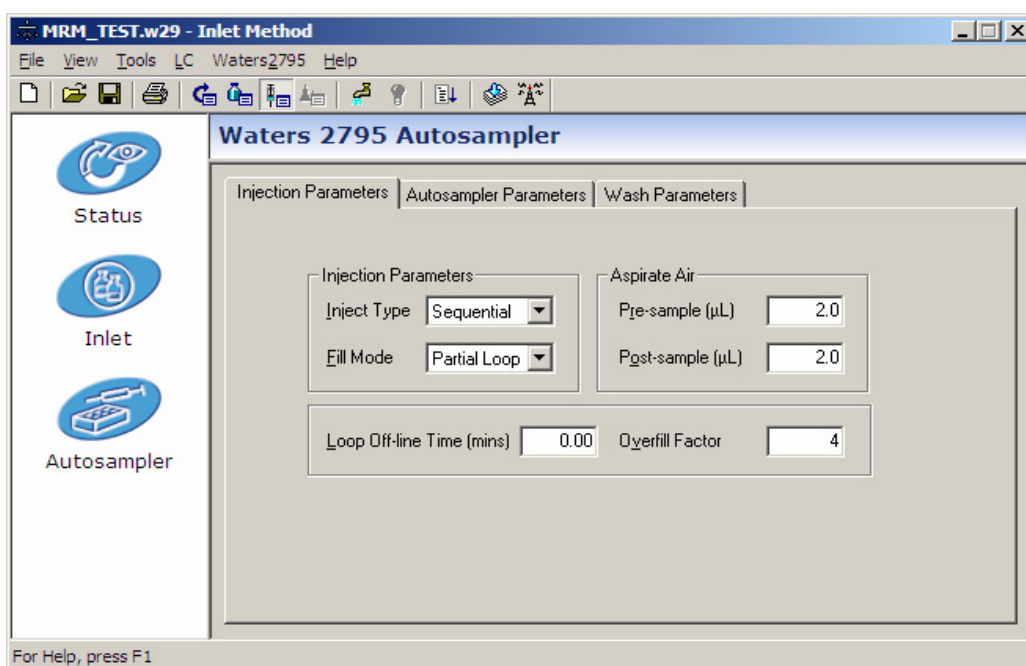
Go to **Inlet File** column, select first cell, right click-> Edit to revise or Browse to select the method, and then edit it:
 Status window:



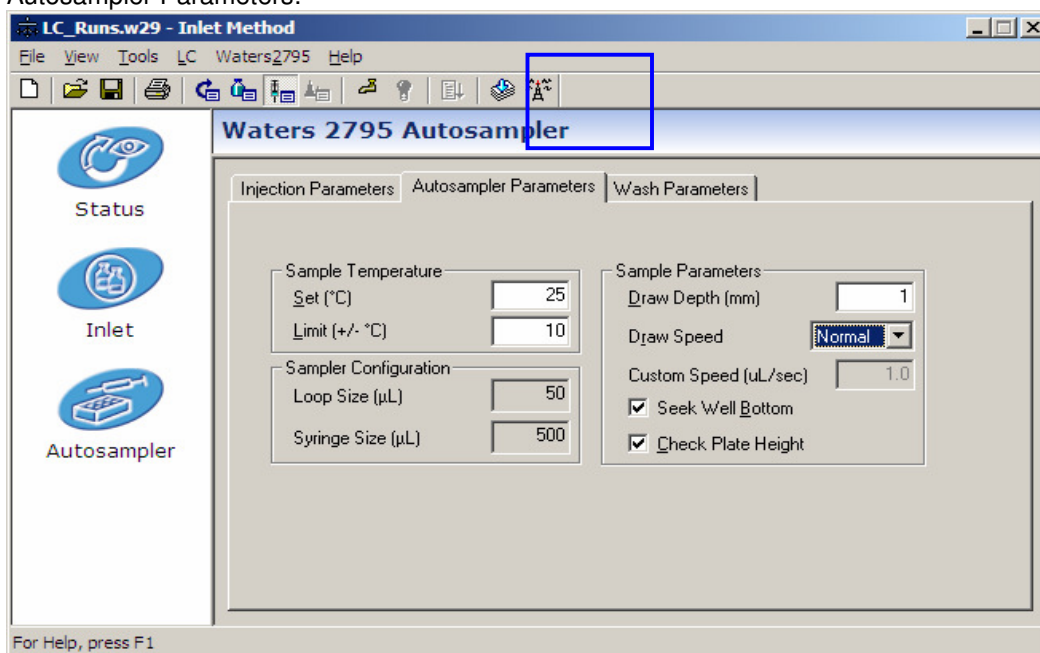
Click on **Inlet** -> Mobile Phase (Other screens are irrelevant):



Autosampler – fill in the needed information:



Autosampler Parameters:



Save the method and select it in the "Inlet Method" column:
To start the HPLC-> LC->Load Method. To control the LC-> click on antenna.

Save the sample list.

Select the lines of samples you want to run and click on the icon **Run**