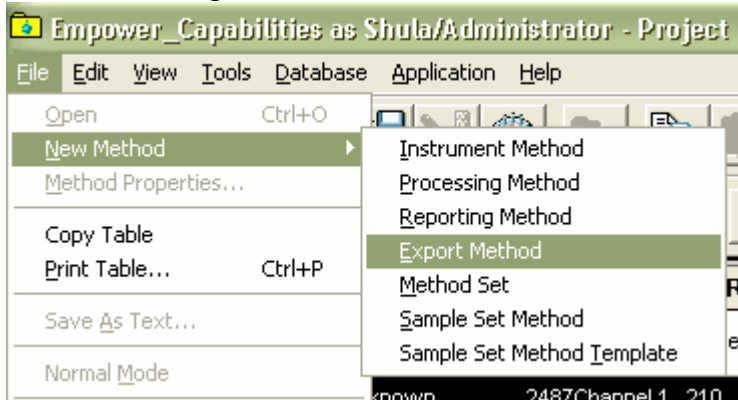
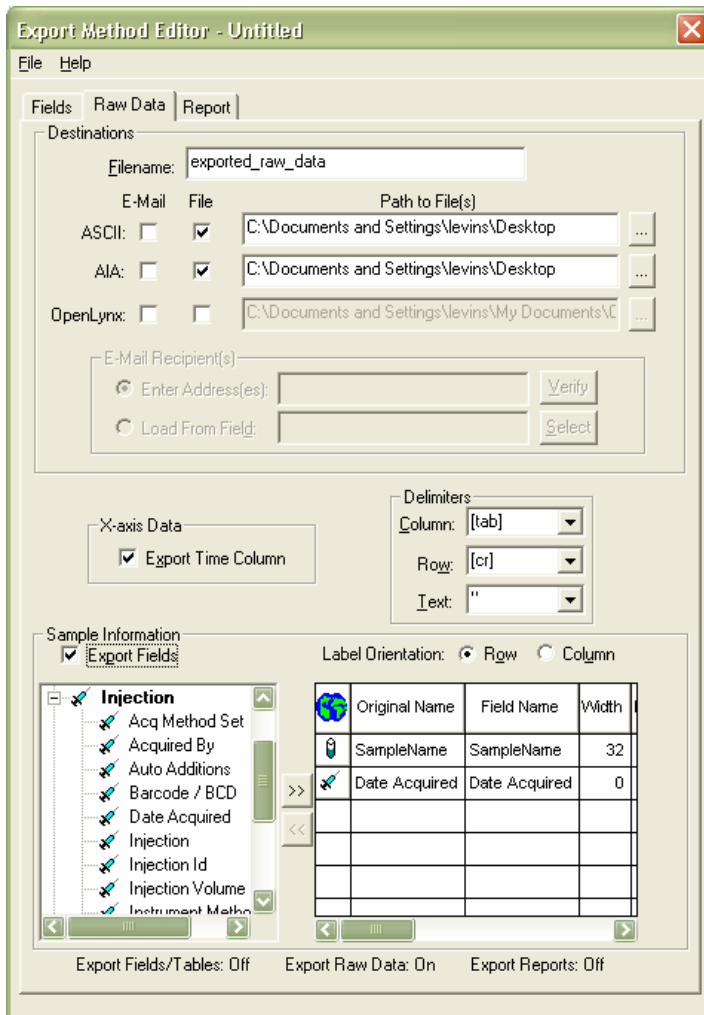


EXPORTING RAW DATA in Empower

1. Create an Export method:



Select the tab: Raw Data and fill in the information needed.



You can create either a tabulated text or cdf file (AIA) which is universal and can be imported into other chromatographic data software.

You have to provide a file name and location.
Save the method and exit.

Go to Browse Project and select the 2D data for export -> Tools -> Export

The screenshot shows the Empower software interface. The 'Tools' menu is open, and 'Export...' is selected. The background displays a data table with the following columns: SampleName, Channel, Processed Channel Descr., Date Acquired, Date Processed, and Processing Method. The table contains two rows of data.

SampleName	Channel	Processed Channel Descr.	Date Acquired	Date Processed	Processing Method
Unk.30	2487Channel 1	210	14/11/2007 00:51:37 IST	08/01/2008 12:49:33 IST	A_Assay
Unk.29	2487Channel 1	210	14/11/2007 00:40:31 IST	08/01/2008 12:49:33 IST	A_Assay

Select the appropriate Export Method and click OK.

The screenshot shows the 'Empower_Capabilities - Background Processing and Reporting' dialog box. The 'Exporting' section is highlighted with a blue box. The 'Export' checkbox is checked, and the 'Use specified export method' radio button is selected, with 'export_raw_data' in the dropdown menu.

Processing

- Process
- Use acquisition method set (i.e. from the sample set used to acquire data)
- Use specified method set
- Use specified processing method
- Clear Calibration
- Use Existing Integration
- How: Calibrate and Quantitate

Reporting

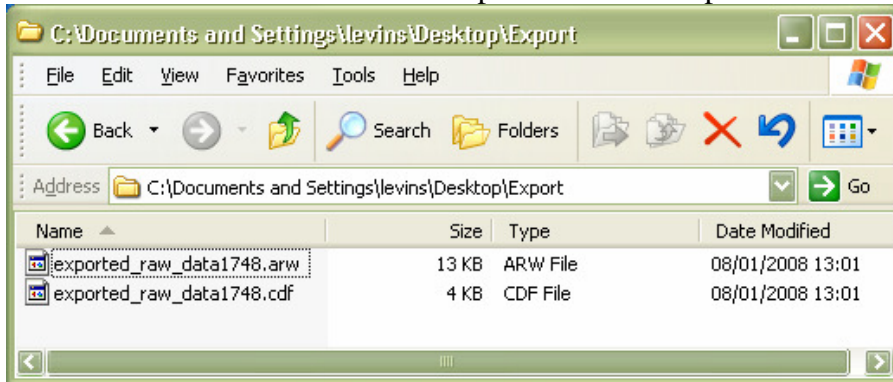
- Print
- Use acquisition method set (i.e. from the sample set used to acquire data)
- Use specified method set
- Use specified report method

Exporting

- Export
- Use acquisition method set (i.e. from the sample set used to acquire data)
- Use specified method set
- Use specified export method: export_raw_data

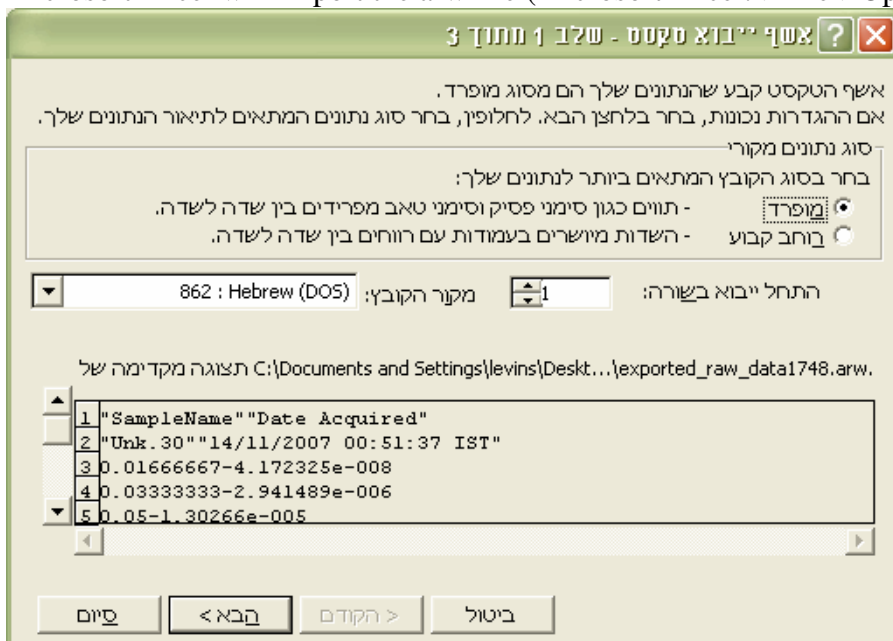
Buttons: OK, Cancel, Help

The files are created in the location specified in the Export Method.



The *cdf* file and the *arw* file.

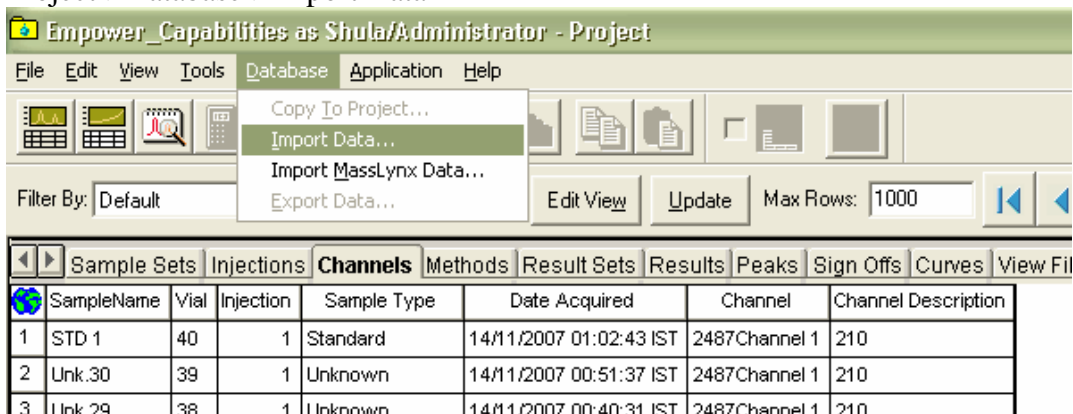
Microsoft Excel will import the arw file (Microsoft Excel:->File->Open (select the option *all files*):



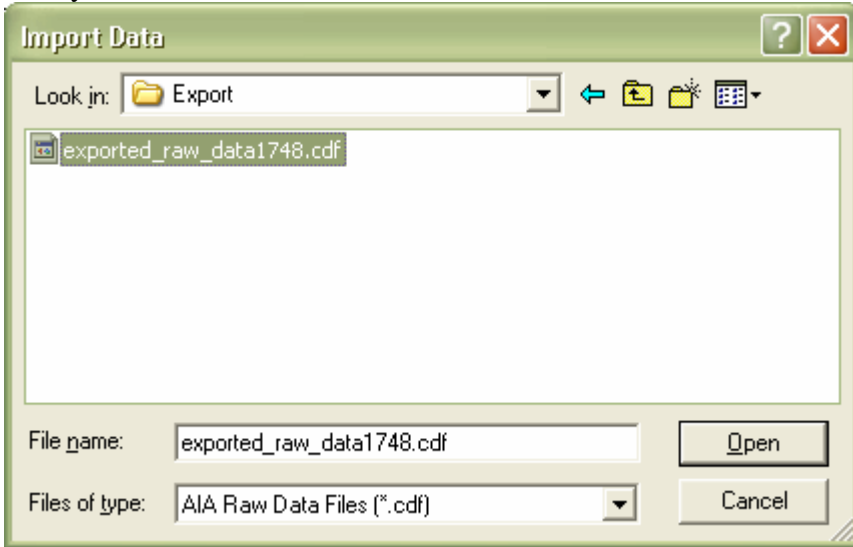
Follow the wizard to the end.

All other chromatographic data software will import the *cdf* file.

Empower can also import *cdf* files from any other chromatographic software. Go to the Browse Project->Database->Import Data



Find your cdf file and select it



It will be imported with its instrumental information.