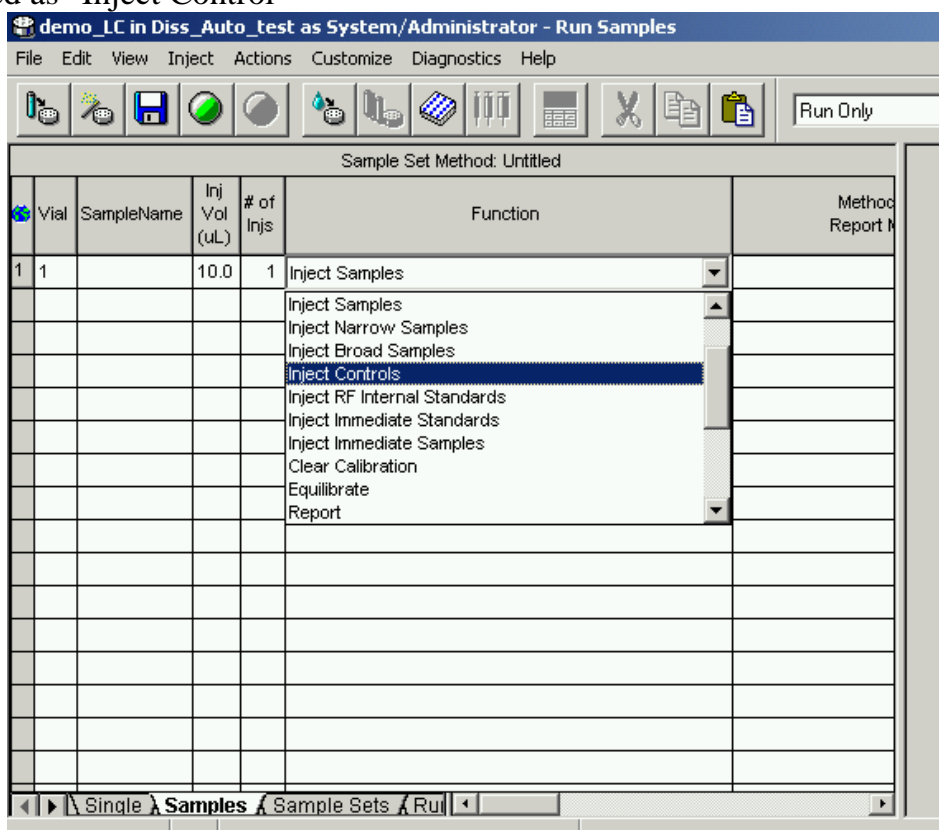


Sample Type = Contol

Accuracy is verified by analysing a control standard as an unknown. In the Run Sample window the function is defined as "Inject Control"



Alternatively, in the *Channels* view the control standard is selected and set as an Control using the *Alter Sample* tool. The weight of this sample will be the known amount and will be entered into the component editor by using *Edit->amount* (The same number that would have been entered as if it was a calibration standard). The value added there is automatically considered as the "Control Value". A custom field can be created in which final result will be the ratio of $(Control\ Value/Amount) \times 100$.

If the difference is needed, a custom field of the type *Peak* is created, in which a formula is used:

$$(100 * (Amount - Control\ Value)) / ((Amount + Control\ Value) / 2)$$

Or alternatively:

$$|100 * (Amount / Control\ Value) - 100|$$

The new field can be called something like *Standard_Compare* and should be added to the report.